



Bonsai Society of Dallas

May 2005

From the Editor:

Keep those great articles coming, folks! I really appreciate them!

Please email any articles or artwork to me at potter@pegasuspottery.com

Message from the President:

By George Straw

I am sure everyone is busy trimming and watching for bugs and fungus on their trees. It is always great to go into the back yard and see the changes taking place with each day. The azaleas are starting to bloom and I am hoping that I will be able to bring mine to the meeting Thursday. (I will if it will fit in my vehicle!)

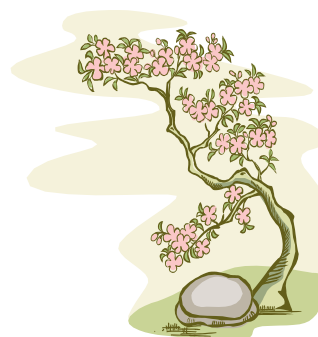
I would like to encourage members to bring your trees to display at the meetings. It is a chance for other members to see some great trees. Also, don't forget that there is someone from the club at the meeting around 5:30PM in case you have questions about a tree or bonsai.

I am getting excited about the Fort Worth convention coming up in May! Be sure to get your registration in ASAP. I talked with Steven Hendricks and he told me that only four people from Dallas have signed up for the convention. This is a great opportunity to see some exceptional artist at work and also to have a number of vendors there for trees and supplies. They still have some spaces available for the workshops so if you are planning on signing up for a workshop, I would do that as soon as possible.

If you did not attend the meeting last month, you missed a great talk on maples by Ray Hernandez! Ray

also generously donated a nice maple bonsai to be raffled off. Thanks, Ray!

July is only two months away and so if you would like to volunteer to host the Barbecue, please let me know!



BSD Calendar

- May 5 - Sylvia Smith, Kusamono
- May 13-15 - LSBF Convention in Fort Worth
- Jun 2 - TBA
- Jul 7 - Club Barbeque
- Aug 4 - Shane Cary, Tropicals
- Sep 1 - Club Auction
- Sep 17 - Marc Noelanders Workshop
- Oct 6 - Marty Klajnowski, Shohin
- Nov 3 - Yvonne Padilla
- Dec 1 - Club Holiday Party

April Program By Daryl Le

Date: May 5, 2005
Time: 6:30 PM
Place: North Haven Gardens
7700 Northaven
Dallas, TX

Please join us on Thursday, May 5 for another great lecture and demo by Sylvia Smith!

Sylvia will be discussing kusamono, the com-

panion plants used in bonsai displays. These small plants, or collection of plants, add a special touch to a display.

Sylvia and her husband, Howard, have been longtime members of BSD. They own BonsaiSmiths, selling plants and tools, and providing wonderful workshops

for bonsai enthusiasts.

In addition, we will begin taking registrations for a workshop with Sandi McFarland to make your own kusamono pot! Details to be discussed at the May meeting.



Other Dates of Interest:

- May 28-31 - 5th World Bonsai Convention, Washington, DC
- Jun 11 LSBF meeting 1PM Zilker Park, Austin
- Jun 18 Shohin Society, 10am, Persimmon Hill Bonsai, Austin
- Sep 17 Shohin Society, 10am, Persimmon Hill Bonsai, Austin
- Oct 22 LSBF meeting 1PM Zilker Park, Austin

May Bonsai By John Miller

The first thing to be done is to be sure you will be at the convention in Ft Worth on May 13-15. There will be some great information by Walter Pall and Mary Madison. Plenty of bonsai supplies and stock by the vendors.

If in spite of your efforts, a tree gets dehydrated from being in high winds or from lack of watering some special care will be needed. If the tree was recently repotted that compounds the problem. First move the plant to a protected area out of the sun and winds and mist the foliage, branches and trunk.

Treatment would depend on how much damage you have to the foliage. If the leaves are dried, and go easy on the watering until new growth starts. Do not pull the dead leaves off because you may damage the latent buds. You may cut the leaf stem if you desire. No fertilizer until the plant starts growing again. If the leaves are mostly green with only damaged tips continue normal care. If the tree is not stressed too much you can then leaf prune later and obtain new foliage.

Leaf pruning should only be done on strong healthy trees. If the spring pinching has been done regularly, the ramification will be there. The only real justification for leaf pruning is to replace the old foliage with new foliage which will be smaller and usually will show better fall color due to being less damaged from normal wear and tear. Leaf pruning must be done after the foliage is fully mature and long enough before summer dormancy for the new foliage to fully develop. In most years, this would be in May. The tree should be given an extra shot of fertilizer two weeks before pruning. Care must be taken so that the latent bud will not be damaged. If the leaf has a stem (e.g. maples) cut the stem with your shears. Leaves with no stem (elm) would have the leaf trimmed as short as possible but not right at the twig. After leaf pruning, the tree will not need as much water until new growth is well under way. Sunshine is good, but if the weather gets very hot afternoon shade would help prevent scalding the inner bark.

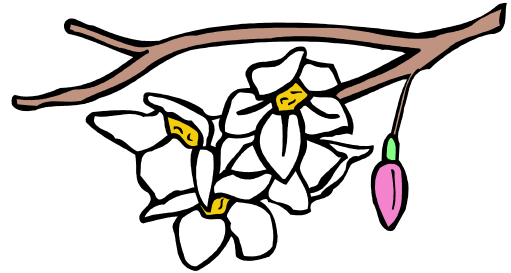
All trees that have wire should be checked. Branches swell up fast in spring. I like to cut the wire to remove it so that I don't break any limbs or twigs. Kathy Shaner on the other hand says she never cuts wire of because you can be distracted and forget a piece or two. This should be a part of your trimming procedure.

The standard horde of pests will be knocking on your door any day now if they are not already at the dinner table. Pale leaves would indicate spider mites. Aphids and woolly scale are easy to see, but you need to look for them. Small caterpillars are easy to miss until you see holes in your leaves. My overall cure for these is to feed the tree. A foliar spray of Garrett Juice (one tablespoon each of fish emulsion, liquid kelp, molasses and apple cider vinegar in a gallon of water) will not only feed the tree but take care of any vermin there. Be sure to spray the under sides of the leaves, too.

For fungal problems, black leaf spot on elms and hollies is one, you may add a tablespoon of baking soda to that mixture. A 1% solution of hydrogen peroxide will work (that is one part of the normal 3% solution to two parts of water). Use care with the peroxide as it could damage very tender new growth.

Repotting season is getting close for tropicals. Generally they may be done whenever the night temperatures stay above 60 degrees. The repotting of tropicals is done when they are in active growth. Be extra vigilant to prevent the roots from drying during repotting.

Most Americans do not fertilize their bonsai properly. We are addicted to quick and labor saving techniques. Chemical fertilizers tend to fall in that bin. Plants can only utilize a small amount of nutrients at a time. Organic fertilizers break down slowly by microbial action. When you water over an organic fertilizer you wash those nutrients into the soil constantly providing the required small amount of food. Water soluble chemical fertilizers give a large quick dose of food. However our bonsai soils do not captivate the fertilizer as well as dirt or commercial planting mixes. The next time you water you wash all nutrients away and the tree starves until the next feeding. I do not like loose organic fertilizers because they tend to wash into the top layer of soil and reduce the air space and keep the soil too moist. Ball type fertilizers do not do that.



Need a Membership Form?

Please contact Sandi McFarland by phone at 972-438-9782 or by email at potter@pegasuspottery.com.

The Texas State Bonsai Exhibit is having a Garage Sale this Fall!

Elaine White of the Texas State Bonsai Exhibit (the group that is trying to develop a bonsai garden in Austin for the state of Texas) has contacted us for donations of items for their garage sale. They are legally independent of any other bonsai organization and are incorporated and qualify as a nonprofit charitable organization and donations may be tax deductible. This is a public garage sale so non-bonsai items are needed, too.

If you would like to donate something, please bring it to the LSBF conference in Fort Worth in May. Elaine will welcome your donations at their table at the near the Raffle area. If you cannot take your donation to the conference, John Miller has kindly offered to gather items brought to him at the May BSD meeting and take them to Elaine.

Business Closing and Moving Sale!

Prices as low as \$15 and up to \$500!

Fukien Teas

BIG Sale on Orchids!

Azaleas

Shimpakus

Young Diep
(214)208-0135

*Juniper &
Maple Forests*

Chinese Elms

Ginkos

Desert Roses

*Mexican
Huckleberrys*

Junipers

Hawthornes

Please call to set up an appointment to see this wonderful inventory!

BSD Board of Directors

President—George Straw, GSTRA@aol.com, (214) 357-3048

John Miller—President Emeritus, bonsaimiller@aol.com

Vice President—Daryl Le, troioi_98@yahoo.com, (214) 995-0693

Asst. Vice President—Tim Phan, phantosme@gmail.com, (972) 618-7134

Treasurer—Jennifer Triptow, jtriptow@hotmail.com, (972) 437-1930

Secretary—Sandi McFarland, potter@pegasuspottery.com, (972) 438-9782

Refinement

by John Miller

When styling your tree, you work from the bottom up (after determining the front and height which determines the location of the first branch). This makes it easier for you to select the branches for proper position and spacing

After your tree has grown its secondary branching, you will need to alter your growing techniques to give it that patina of age.

When working on the tree for development, that is, pruning to develop ramification and small leaves, work from the top down. This helps to keep the tree within design bounds because tendency is to trim lower branches back only as far as the foliage on the higher branches. Starting at the top, you have the higher branches trimmed back to their proper length. Also, you will be cleaning out the fallen trimmings as you work, doing it only one time. If you start at the bottom you need to go back and remove any fallen debris, double work. And also you will tend to be higher than the tree so that if you start at the top it will be easier looking down thru the thinned portion that you have worked on.

Points to consider:

1. Remove branches or twigs that are growing vertically, either up or dangling.
Trim all new shoots. See below.
2. If any branches are getting too long (outside the desired canopy), trim back to a smaller secondary branch.
3. Remove all fallen leaves and other debris from the soil. Pull any weeds showing. Replenish soil where needed (with the same type as used before).
4. Double check. Missed shoots get all the plants energy, grow fast, and will stick out like a sore thumb.
5. Review. Are any places displeasing to your eye?

Trimming: On alternate leaf growing species (e.g. elms), trim new shoots back to 2-3 leaves so the new shoot emerging from the last leaf will grow in the desired direction. This should be done by the time the twig is elongated to five or so leaves. On opposite leaved species (maples), the growing tip should be plucked as soon as its internode can be seen. The proper tool for this is the tweezers.

Junipers and their cousins with scaled foliage are maintained by grasping between the fleshy parts of the thumb and forefinger and plucking the tips. Pinching with fingernails or cutting with shears will result in brown tips on the twigs.

If this sounds like a lot of work, I can only repeat what Kathy Shaner told us, "If you have a really good maple, you are going to be sleeping with it."

More from the Dallas Arboretum Show...

Absolutely beautiful!



Texas LSBF 2005 Bonsai Convention

May 13-15, 2005

Holiday Inn North, 2540 Meacham Blvd., Fort Worth, TX 76106, (817) 625-9911
Sponsored by: The Fort Worth Bonsai Society and the Lone Star Bonsai Federation

Featured Artists:

Walter Pall, Germany; Mary Madison, Corpus Christi; John Miller, Dallas/Fort Worth;
Estella Flather, Fort Worth; and Ray Hernandez, Dallas/Fort Worth

Workshops:

Trident Maple, "Pokomoke" Crepe Myrtle, Root-Over-Rock Tridents, Piñon Pine, Chinese Elm Shohin,
Bald Cypress Forest, Casuarina, and "Bring Your Own"

Lecture/Demonstrations; Tree Critique; Bonsai Exhibit, Slideshow, Vendors, Raffle

For more information visit the Fort Worth Bonsai Society website at

www.geocities.com/Heartland/Plains/3647/

Registration Contact: Steven Hendricks - stevenhendricks@sbcglobal.net

Vendor Contact: Estella Flather - (817) 295-0802

Some Notes on the Convention by our President Emeritus, John Miller:

The headliners are Walter Pall from Germany and Mary Madison of Florida. Mr. Pall comes with a glowing endorsement form no less a personage than Kathy Shaner. Ms. Madison is the renowned "Buttonwood Queen" and will be bringing the casaurina trees for her workshop.

The casaurina has been featured in several magazine articles lately. Ernie Kuo developed his casaurina from a stick to a very nice pine looking bonsai in only four years. Michael Hagedorn, a well-known bonsai potter as well as artist who is currently interning in Japan, has been published in Bonsai Today on collecting styling and care of the Pinon Pine which will do well here contrary to some opinions. Other workshops with tridents, elms, crape myrtle, and a bald cypress forest are pitched to cover from beginners to advanced bonsaists.

If you need any other information, please call me at 903-776-2910.



Pegasus Pottery

By Sandi McFarland

"Specializing in carved stoneware"

Cups, plates, bowls, etc.

And now creating small bonsai pots!

Let me make something special for you!

1405 Limetree Ln.

Irving, TX 75061

972-438-9782

potter@pegasuspottery.com

www.pegasuspottery.com

Generous Businesses Give Discount to BSG Members

Present your BSD membership card at the following participating businesses for a 10% discount on merchandise:

- The Bonsai Smiths
- Dream Gardens
- Ray Hernandez's Bent Tree Bonsai
- Pegasus Pottery

We are so grateful to these businesses for their generosity to BSD members! If you have a business and would like to offer a discount to club members, please contact George Straw at GSTRA@aol.com or Sandi McFarland potter@pegasuspottery.com.

Calloway's Nursery has a Great Offer for You!

Donna Harris, the store manager of Calloway's Nursery on Greenville Ave. in Dallas, has invited the members of the Bonsai Society of Dallas to come by their location and pick up two free soil sample kits. Return the kits with your soil and they will send them to the Texas Plant and Soil Lab to test and call you when the results come in.

These soil tests are a \$20 value for free and when you drop off your sample of soil, you will receive coupons and special discounts good for Calloway's quality products.

Please contact Donna with any questions:

Donna Harris, Store Manager

Calloway's Nursery,

7410 N. Greenville Ave., Dallas, TX 75231

214-363-0525

Place Your Ad Here!

Business card size—\$5 per month

Half page—\$20 per month

Full page—\$35 per month

For more information, contact Sandi McFarland at
972-438-9782 or potter@pegasuspottery.com