



Bonsai Society of Dallas

Message from the President:

By George Straw

I hope that everyone had a great Thanksgiving and are looking forward to a Happy Holiday!

We will have the Holiday Party at my house on December 1 and it will start at 7:00 PM. I do hope that everyone will be able to attend. We always have a great time.

It is some strange weather that we are having. I keep looking for the trees to start blooming thinking it is spring

again. Here it is the end of November and we are still having 80 degree temperatures! My tropics are all in the greenhouse waiting the expected freeze that I am sure will come along.

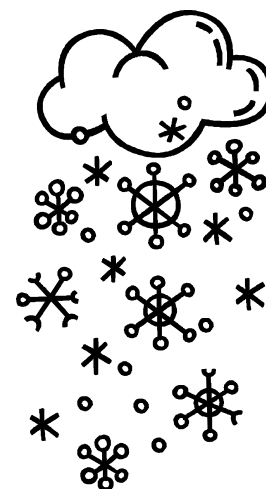
We have not had any takers on the Vice President position, so I have decided to take on the position until we have elections next year. Sylvia has offered to help me with the scheduling of events. Keep in mind

though that next year is an election year and we will need people to step up and help with the running of the club. It is great to have a Bonsai club but it is very difficult to run a club when only a few people will help with the running and organization of the club. So please think about people you would like to see as officers when it comes next November and it is election time.

George

From the Editor:

I am sad that school will once again prevent me from attending the Holiday Party! I wish all of you a warm, loving, and blessed Holiday Season!



BSD Calendar

- Dec 1- Club Holiday Party
- Jan. 5 - Howard & Sylvia Smith - TBA
- Feb. 2 - Craig Coussins - Juniper
- Mar. 2 - John Miller - TBA

December Program

Date: Dec. 1, 2005
Time: 7:00 PM
Place: George Straw's
3570 Vancouver Dr
Dallas, TX

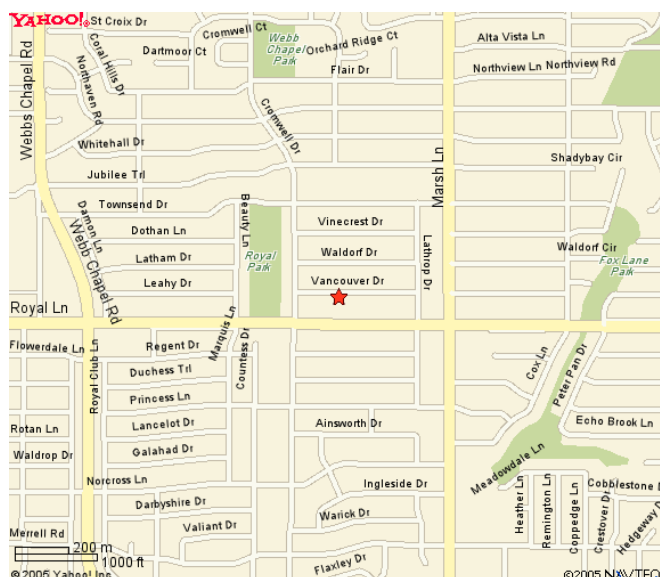
Join us for our Holiday Party!

The Club will furnish the meat and members are asked to bring a side dish to share. Please contact George at 214-357-3048 or

gstra@aol.com to let him know that you will be attending and what you will be bringing.

As is tradition for the Holiday Party, there will be a drawing for door prizes.

We hope to see you there!



December Bonsai

By John Miller

Finally got the temperature low enough to move all my trees out and spray the benches and greenhouse with lime sulphur diluted to the dormant spray recommendation. I first sprayed all plants with the old Garrett juice formula a couple of times a week apart and again before bringing them in to prevent any re-infestation with insects. Right now for the first time in a long while I do not see any fire ants in the greenhouse.

A caution on lime sulfur--the same stuff we use on jin and shari. The liquid lime sulfur is somewhat caustic, so it should be used with caution. If used as a dormant spray application, it should only be made to fully dormant plants, deciduous trees with tight winter buds, not on very warm days, and only when diluted as given on the bottle.

For a dormant spray to control over-wintering insects, I would rather use a horticultural oil spray. This is a lighter, less toxic version of the older dormant oil spray. Used accordingly to the label directions for strength and temperature limitations, you should be able to use it on the evergreens also.

Want to know how cold it could get to? Try looking at the dew point temperature. That is how low the nighttime temperature could go to on a clear, windless night. I base my bonsai activities on that just in case the conditions on which the official forecast is made change overnight.

Since the trees are not using as much water during dormancy, it is easy to overlook checking on them. The low humidity usually found during winter helps dry the soil. Winter sun can be pretty hot and if it shines directly on the pot, it will hasten the drying process. Winter will usually also be more windy. Therefore, however you bed down the trees, you need to check the dryness often. The same trees that needed more water last summer will also need to be checked more often during the winter. I think that more trees are lost during the winter to having the soil dry out than from the actual cold. Especially watch the plants that will need repotting next spring. Pots full of circling roots do not hold much water, but those that had a lot of organic matter in the soil mix may be soggy. Organic matter that has composted during the summer will be very fine textured and hold on to the water a long time.

Deciduous trees should **not** be placed where they receive winter sun. After a period of dormancy, a warm spell could heat the tree and could possibly cause it to break dormancy prematurely. If that happens, you would need to keep it above freezing the rest of the winter.

While you are enjoying the winter silhouette of your deciduous trees, you may plan any improvements to be made. Are there any crossing branches? Any that have grown too long or too thick can be cut back to a smaller branch and ramification improved. Do any of the branches need repositioning? Complete this work before sap flow starts in the spring.

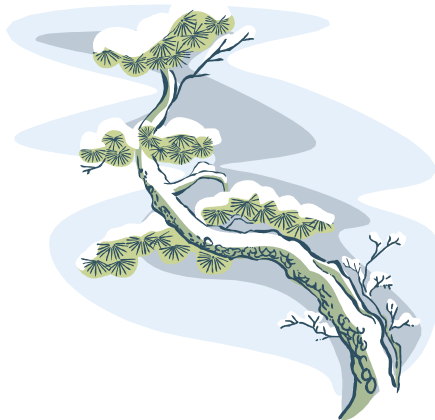
Keep any evergreens that are growing pinched. Some junipers especially want to grow during the warmer parts of the winter. Those like the dwarf yaupon tend to be self pruning in winter: they grow and then get nipped back by the next freeze. Renew the lime sulfur treatment of jins and shari.

If you have a greenhouse, you can use it to work on some of the species that are normally left outside. Elms, Japanese maples, and yaupons are some of the species that you can use. Before taking them into the greenhouse, you should give them some preparation. They should be given some dormancy. Withhold fertilizer and keep on the dry side (not bone dry) until they start dormancy. Leave them out until they have had some frost, two to three weeks for Chinese or Catlin elm, four weeks for the Japanese maples. I take some small tridents in later in the season (like January). Yaupons will do nicely without much dormancy at all. When you take them in, keep in a cooler corner of the greenhouse and give them lots of water and fertilizer. They should respond fairly quickly. Be ready to pinch new growth or you will not benefit at all from the longer growing season.

Bonsai in greenhouses or indoor bonsai will need to be watched for the normal indoor problems. Spider mites and scales are the biggest problems here. Trying to keep the humidity up by placing you trees on a humidity tray can possibly give you some soil problems, root rot or some other fungal disease.

Take time to clean up around your bonsai area. Remove leaf droppings, clipped twigs and any other organic matter. Pick up any trash that may have accumulated. This will help remove sources for unwelcome bugs and fungi to exist through the winter. Clean unused pots and prepare soils screens and tools for next spring's work.

And lastly, go out and enjoy those bonsai some more.



Need a Membership Form?

Please contact Sandi McFarland by phone at 972-438-9782 or by email at potter@pegasuspottery.com.

Lone Star Bonsai Federation Meeting Minutes

October 22nd, 2005 – 1:00 PM

Zilker Garden Center, Austin, Texas

The President called for approval of the minutes. Pat Ware pointed out that the minutes did not include Steven Hendricks as the nominee for LSBF Secretary. The motion was made and carried to approve the minutes as amended.

Treasurer's Report

Pat Ware presented the Treasurer's Report and expressed concern at the dwindling of LSBF funds. She passed out reimbursement checks to the clubs who hosted Marc Noelanders during the 2005 LSBF speaker tour.

Pat indicated that only 3 or 4 clubs have made use of the extra Texas Speaker that had been approved for one year only. That extra speaker included the speaker fee (\$75) and mileage (\$0.31/mile) and if a workshop, \$10/member.

Steven Hendricks presented a check to the LSBF Treasurer for \$2,051.27 as the Federation's half of the profits from the 2005 LSBF Convention.

LSBF Conventions

2006 - Yvonne Padilla talked about the upcoming 2006 convention in July in Corpus Christi. She indicated that registration forms would be available in January and a convention web site would be available through the Corpus Christi web page at www.corpuschristibonsaiclub.com. She pointed out that the Fall 2005 LSBF Magazine included a description and pictures of the workshop materials. John Miller suggested that pictures of the convention trees on a CD in JPG format might be useful for some clubs to raise interest in the convention. Yvonne indicated that the guest artists for the convention include Johnny Uchida (California), Bruce Baker (Michigan), and Ed Trout (Florida).

2007 – John Miller indicated that they were still looking for a venue for the 2007 convention. A majority of the material has been procured. Marco Invernizzi and Boon Manakitvivipart are already committed to be guest artists and they also hope to have either Suthin Sukosolvisit or Michael Haegedorn. Dallas is aiming for an April convention.

2008 - Marty Klajnowski briefly discussed the 2008 convention which will be hosted jointly by San Antonio and Austin. There is still a chance that it might also be co-hosted by the American Bonsai Society. The ABS is currently experimenting with a new format that is more education oriented.

LSBF Speaker Tour

2005 - Dennis & Lisa Corley were not present. The board discussed the need for contact numbers for each club. Marco had some bad problems with flight connections and did not always have needed club contact information. In addition, he had some problems at home during his absence and friends in Belgium did not know how to reach him.

2006 - Ron Smith was not present. The board discussed artists from a list he previously submitted and voted to instruct Ron to schedule Cheryl Manning if possible and Ted Matson if not. October is preferred but September is acceptable. Els Ulug agreed to pass this information on to Ron.

Candidates for LSBF Officers for 2006/2007

The board voted to elect the slate of officers presented at the last meeting:

President – John Denton

Vice-President – John Miller

Secretary – Steven Hendricks

Treasurer – Pat Ware

Continued on Page 4

Lone Star Bonsai Federation Meeting Minutes

Continued from Page 3

TEXAS BONSAI

Terry Ward gave his final Annual Report as editor of Texas Bonsai. In the absence of a new editor Terry indicated that he had not sent out requests for renewal to advertisers and had no budget request to present for 2006. He turned over all magazine related documents to the President. The board thanked Terry for his hard work in publishing Texas Bonsai these past many years.

President Steven Hendricks asked the assembled representatives if any of their membership had indicated a willingness to take over as editor. David Quisenberry graciously agreed to act as editor for "a couple" of editions. The board gave a resounding thanks to David. All Bonsai Today related documentation was turned over to David.

Bonsai Teach & Speak Seminar

Yvonne Padilla discussed the idea of having Mary Madison come to Texas and present "Teaching Bonsai and Presenting Bonsai Lectures and Demonstrations." LSBF would pay her expenses and the cost of registration could be paid by those who are interested in becoming a bonsai presenter. It could be scheduled for both the northern part of Texas and the Southern part. Yvonne will contact Mary for additional information.

Spirit of Bonsai Wristbands

Marty mentioned a recent email sent out by the ABS to raise money for the organization which is having financial troubles. Wristbands are \$5 or \$6 dollars.

Insurance

Pat Ware reported that the insurance for next year went up from \$1146 to \$1512 dollars. This insurance covers all LSBF activities including LSBF conventions. The renewal had come due before the October meeting so debate on the renewal was not possible. In consultation with Treasurer, Pat Ware, President, Steven Hendricks made the decision to renew the insurance rather than let it lapse. Marty Klajnowski suggested that she might have an alternate source for insurance that would be cheaper. Marty agreed to provide Pat with the information. Should the other provider prove to be substantially cheaper we have the option of canceling our current policy.

Meeting adjourned at approximately 2:30.

BSD Vice-President Position Open

The Vice President is responsible for arranging the guest speaker for each meeting. This may be a local person or someone from out of town, depending on the Club budget.

This position is also responsible for making sure that we have a meeting room (we have a standing for the first Thursday of each month at North Haven Gardens). But if we have any special event, then we would need to make arrangements for that. At the meeting, the Vice President would be responsible for introducing the guest speaker, as well as be responsible for flight arrangements and housing for the guest (this could be hotel or see if a member would like to host the guest). The Vice President is responsible for sending a bio of the guest artist and information about the program to the Newsletter Editor; and a notice about the program subject is to be sent to Tom Mozden for the Dallas newspaper (this must be done two months in advance).

The Vice President would also be expected to attend the Board meeting, this is usually about once every three months.

If you have any other questions about the position, please contact George Straw at 214-357-3048 or gstra@aol.com.



Jennifer Triptow
REALTOR®

Ph. 972-533-9703

*jennifer.triptow @
northdallasfinehomes . com*

www . northdallasfinehomes . com

What is your home worth?

Bonsai Society of Dallas members
take advantage of my

FREE MARKET ANALYSIS

Contact me today and I will create a free, detailed analysis of your home and the surrounding homes in your area. I will compare amenities until I reach a competitive, fair market value for your home.

Your market analysis will be presented to you in a detailed report, with no obligations whatsoever.



Generous Businesses Give Discount to BSG Members

Present your BSD membership card at the following participating businesses for a 10% discount on merchandise:

- The Bonsai Smiths
- Dream Gardens
- Ray Hernandez's Bent Tree Bonsai
- Pegasus Pottery

We are so grateful to these businesses for their generosity to BSD members! If you have a business and would like to offer a discount to club members, please contact George Straw at GSTRA@aol.com or Sandi McFarland potter@pegasuspottery.com.



Howard and Sylvia Smith
www.bonsaismiths.net
bonsaismiths@earthlink.net
tel# (972) 392-1430
Fax# (972) 661-0694

Cultivators of fine trees
Collection maintenance
Private instruction
Classes, lectures and demos



Pegasus Pottery

By Sandi McFarland
"Specializing in carved stoneware"
Cups, plates, bowls, etc.
And now creating small bonsai pots!
Let me make something special for you!

1405 Limetree Ln.
Irving, TX 75061
972-438-9782

potter@pegasuspottery.com

www.pegasuspottery.com

Place Your Ad Here!

Business card size—\$5 per month
Half page—\$20 per month
Full page—\$35 per month

*For more information, contact Sandi McFarland at
972-438-9782 or potter@pegasuspottery.com*

BSD Board of Directors

President—George Straw, GSTRA@aol.com, (214) 357-3048

John Miller—President Emeritus, bonsaimiller@aol.com

Vice President—This position is open

Asst. Vice President—Tim Phan, phantosme@gmail.com, (972) 618-7134

Treasurer—Jennifer Triptow, jtriptow@hotmail.com, (972) 437-1930

Secretary—Sandi McFarland, potter@pegasuspottery.com, (972) 438-9782