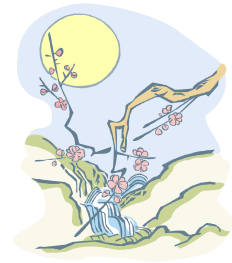




Bonsai Society of Dallas

April 2007



Message from the President:

By Sylvia Smith, for George Straw

Although I haven't been president in quite some time now, I will give you an update on a few things. First of all, our president is doing well and in Singapore and soon to be off to Bali despite recovering from bronchitis and getting an ear infection from Dallas to Singapore. He will be returning just in time for all of the fun at the convention.

This brings me to the second subject, the convention. Don't forget to attend the upcoming meeting. It will be our first Saturday meeting and we will be working on the companion plants for the centerpieces at the dinners. The pots were all made by Sandi with a little help from George, John, Howard and I. Even Sandi's mom and sister helped us glaze them. Also, if you plan on bringing a tree to show at the convention bring this too, along with any moss that you may find after these nice spring showers. Howard and I will be showing you how to prep your trees for show. Please make

sure to bring your raffle donations for the convention to this upcoming meeting. Sandi would like to get started on this ASAP and up until now she has very little stuff donated for raffles. Please remember that a convention makes ALL of its money from raffles!! It is also not too late to sign up and donate some of your time to help at the many posts that we have. Conventions are team efforts so please support your club.

Do you own a great tree that just doesn't thrill you anymore? Please contact the Smiths or George about our club table at the vendor area. We will be doing a 20/80 split on sales of items over \$100. Please, no small stuff as these would be better as donations to our raffle sales. Our space is very limited and you must volunteer some of your time to this endeavor so please do not bring your items on the day of the convention and expect to have these sold at the table. We have opened this to all clubs in the area so we

are very limited on space and will allow only high quality material to be sold in the vendor area. Make sure you contact us first as we will have to take your items, label them, and sort them out before the convention.

We need trees for the show! I hope that everyone has been thinking of what to bring to show but as of now I have not received any display forms from any of our membership. Let me remind you that we have decided to give a \$500 gift certificate in the vendor area for the winner of "Best in Show." Also, we will be giving awards to the winners in the category of "Best Conifer," "Best Deciduous," and "Best Tropical/Broadleaf Evergreen." Please send your tree information ASAP as we have limited space. We will also be showcasing suiseki, and pottery so please send in your information for these as well. You can e-mail me your information at slysmith@earthlink.net or you can drop a form off in the

mail or bring it with you to the next meeting.

Don't forget to register for the day. \$30 will get you in to see all of the workshops. We will have two lunches, two dinners and a Sunday brunch with informative lectures and demonstrations. So, don't forget to get your money in for these as we need a head count so that we have enough food for everyone. You can pull up any of the forms that you need on our website at www.bonsaisocietyofdallas.com then just click the "Texas Bonsai 2007" icon.

We are less than three weeks away from the big event!! See you soon.

Sylvia Smith

April Program by Sylvia & Howard Smith

Date: **Saturday**, April 7
Time: 9:00 AM
Place: North Haven Gardens
7700 Northaven
Dallas, TX

We hope to have a BIG attendance at our first ever Saturday meeting. We will be starting our meeting at 9:00am and will work until noon making our centerpieces for the convention and also prepping trees for show.

Please look around in your area for any nice green moss that can be scooped up and used for the convention. We need as much as we can find! Also, don't forget to bring a few tools; wire, wire cutters, tweezers (bent tip will be best) and scissors (a pair for roots and a pair for trimming).

We will also be collecting any and all donated items for the convention. Please be

very generous with your tax deductible donations as this is how we make most of our money for the next five years of programs. This will be a fun day leading up to the convention so don't miss it. Plus, we will be at North Haven Gardens during operating hours so NO MORE WINDOW SHOPPING AT NIGHT! We can actually make purchases!

See you there!

BSD Calendar

- Apr. 7 - **Saturday** - Tree Preparation for Show/ Kusamono Work Day
At the April 7 meeting, please join us to help pot kusamonos for table decorations at the convention!
Bring your potting tools, and any questions you have about kusamonos!
- Apr. 20-22 - **LSBF Convention**
- May - TBD
- June - TBD

Other Dates of Interest

Apr. 14-15 - Spring Festival in the Japanese Garden at the Fort Worth Botanic Garden

April Bonsai by John Miller

When doing the trimming called for in bonsai care, you need to alter your technique according to the state of development of your bonsai. When developing branches, the twigs are let grow longer but after branches are in place, you prune to develop the twigs. Mature bonsai require the type of pruning to keep the twigs small but also may require pruning to replace overgrown branches.

When developing new branches, you must let the shoot grow out without the pinching back. When the shoot has reached the desired diameter, you may need to cut back and grow another shoot to create movement and taper. Wire should not be applied until the shoot has lignified.

Trimming for twigs, that is the pinching, plucking or whatever of new growth, is the process that develops refinement on your tree but is also vital to keep it from losing that desired state. This is not pruning, which is cutting of branches. This should not be done when there is a strong sap flow, which starts when the tree breaks dormancy and continues until after the leaves harden or later.

Trimming must be done often, especially during spring flush of growth, to keep the new growth short. Do not let the shoots get long. Done properly, you will be working on a small percentage of the twigs in each session while the ones you did before are getting new growth started again.

On elms and other trees with leaves appearing alternately down the shoot, do not let more than 5 new leaves appear. Cut back to 2 or 3 leaves, leaving the last leaf on the side that you want the new growth to appear. On maples and others with leaves coming in pairs on opposite sides of the twig, cut the center shoot as soon as you can determine it. Tweezers work best for this operation. Since the shoots do not all open at the same time, this could be a daily chore for the best results.

Be sure to check your soils each day for proper water content. It is easy to assume that the soil has plenty of water when the days are cool or there has been some rain. It's too easy for a tree with full leaves to shed water outside of the pot or a good sun and low humidity after a front to dry the soil. I suggest that you remove most of the moss so that you can see and feel the soil in order to determine how dry it is. (Moss growing on the trunk or roots will cause the bark to rot also.) An automatic watering system will be an aid, but you should not rely on it to replace hand watering. Hand watering allows you to adjust the watering for each tree individually.

Most trees will do well in the full sun at this time of year. However, if you have had them in partial shade, be careful about moving them to full sun. They probably should be acclimated gradually.

A good organic program takes care of both the feeding and the insect problems. I recommend the mixture of 1 tablespoon each of fish emulsion, liquid kelp, molasses and apple cider vinegar to a gallon of water. (A commercial product called Garret Juice which is to be used the same way uses compost tea, dried seaweed, water, molasses and vinegar. As a fertilizer, this should act the same but I don't know about the dried seaweed versus liquid kelp as an insecticide.) I use the mixture both as a foliar spray and as a soil drench fertilizer. As a weekly foliar spray, it keeps aphids and mites under control. I also use it on cuttings but can't vouch as to whether the results are from supplying nutrients that cannot be supplied due to the lack of roots or if it is from keeping insects away. I try to drench twice a month partly because I don't think the plant can absorb all the minor elements it needs through the foliage.

Fungal diseases develop during warm humid weather. Too much foliage misting can do it also if the leaves stay damp very long. One of the most prevalent fungus is leaf spot which will hit several kinds of plants, especially elms, hollies, and roses. Control consists of spraying with baking soda. A 1% solution of Hydrogen Peroxide (mix one part 3% peroxide to two parts water) can be used except on very young foliage which may be sensitive to it.

The newer horticultural oils may be used to control scale if they get missed by the organic spray.

If you go the chemical way, be sure to follow label directions. Do not use oil based sprays on buttonwoods or other oil sensitive plants.

One of the cheapest ways to learn bonsai is to be a part of the club exhibits. I learned a lot by following George Gray and Ted Guyger around and just listening to their comments about the different trees. Most were their own trees, but they did an honest critique anyway. If your club has an exhibit scheduled, plan to take part in it. Showing your tree is a big boost to your morale. Not every tree in the show has to be a top of the line bonsai. The important thing is that each member be a part, either displaying a tree or being a docent. The desired result is that the public can see something that they can relate to and have someone to talk to. If you do want to show, give your tree its best chance by doing the above grooming, clean the pot, put some top dressing on the soil, get or borrow some kind of a stand (even a cork board can set the tree off).

Plan to attend workshops at the convention or those provided for you by your officers. To get the most from a bring-your-own-tree workshop, you should prepare the material well in advance. You can usually cut the top back some and try to grow some new lower foliage to have more for the master to work with. Again, most of your active club members will be willing to give some advice.



Drawing by Estella Flather 2006 © All rights reserved

Don't miss out! Register today for the 2007 LSBF Bonsai Convention!



We need your help!

You can help make this convention successful! Contact one of the convention chairs and offer your help today!!

Keep an eye on the club website, www.bonsaisocietyofdallas.com! It is being frequently updated with the new convention and registration information.

Your convention chairs are:

Chairmen:

George Straw

gstra@aol.com 214-357-3048

Howard Smith

bonsaismiths@earthlink.net 972-392-1430

Co-Chair:

John Miller

bonsaimiller@aol.com 903-776-2910

Registration & Display Chair:

Sylvia Smith

bonsaismiths@earthlink.net 972-392-1430

Vender Chair:

Howard & Sylvia Smith

bonsaismiths@earthlink.net 972-392-1430

Marketing Chair:

Howard & Sylvia Smith

bonsaismiths@earthlink.net 972-392-1430

Raffle Chair:

Sandi McFarland

potter@pegasuspottery.com 972-438-9782

Website Chair:

Andy Rutledge

andy@andyrutledge.com

25TH LSBF CONVENTION UPDATES AND INFORMATION by John Miller

Exhibit Prize Information

There will be prizes awarded to trees in the exhibit. The Best of Show tree will receive gift certificates from John Kirby and Bonsai Smiths in the amount of \$500 in addition to the Best of Show crystal plaque. The other awards Chrystal plaques for 1) best conifer, 2) best deciduous/broadleaf evergreen, and 3) best tropical. There will be a People's Choice award voted on by exhibit viewers who will receive a certificate and a bonsai pot by Sandi McFarland.

We want to get back to the old practice of all LSBF clubs participating in the exhibit. We plan to put together a memorable, high quality semi-formal display as well as suiseki display.

Sylvia would like to receive tree information as requested on the website so that she may get ID cards printed before the convention. Please go to www.bonsaisocietyofdallas.com and look at the exhibit page. Since she has several functions, in addition to being a vendor, this would be a great help to have a grand exhibit.

Workshops

As usual at this stage, there are still openings in most workshops. I urge you, especially the newer members, to take a workshop or two. You can only instill what you have learned by actually doing the hands on effort under the guidance of a qualified teacher. And our set of teachers is second to none.

The size of the Itogawa junipers was incorrectly listed. The junipers being brought by Suthin are quality plants of 13-14 inches height. Itogawa junipers are the elite of the Shimpaku junipers. Their foliage is much finer than the standard Shimpaku. These will make very fine small bonsai but not necessarily shohin.

Other

Time is running short to get to the Silver Anniversary LSBF convention being staged in Dallas on April 20-21-22. The convention information is now on the web. Go to www.bonsaisocietyofdallas.com and click on the convention block.


The convention will be held at the Holiday Inn Select, 3300 West Mockingbird in Dallas which is adjacent to Love Field and has a complimentary shuttle. To get the reduced rate of \$79, you should use the code BSO when making your reservation.

The three headliners, Marco Invernizzi, Boon Manakitvipart and Suthin Sukosolvisit will each be doing a lecture-demo after the evening dinner as was done in early conventions. Boon has been preparing two large caliber trees for the Friday and Saturday demos.

Last, but certainly not least, any donations to the raffle will be most appreciated!

THE TEXAS STATE BONSAI EXHIBIT SIX-MONTH HIGHLIGHTS

- The acquisition of land for the permanent exhibit in place by August 15, 2007 near the 1-35 corridor and the state capitol.
- Architect Ken Credeur of Houston has offered his services to complete the plan of the permanent exhibit and any necessary budgetary planning required
- The receipt of three-three man bonsai trees from the Pepitone family of Houston.
- TTSBE was designated as a recipient of 1/3 of the estate of an anonymous donor. The estate is currently valued at \$1,000,000.
- A large collection of bonsai pots including a Satsuma pot from the estate of George Gray of Dallas, a long time collector of Asian art.
- Unpublished collection of John Yoshio Naka original drawings made available for the permanent exhibit's use from John Pittenger from Georgetown.
- One only bronze bust of John Yoshio Naka sculpted by Donna L. Dobberfuhr, N.S.S., offered to TTSBE for fund raising from the International Bonsai Community—drawing May 19, 2007, the anniversary of his passing, which is a Japanese tradition of remembrance.
- An immediate fund raiser to be held at the Sculptural Designs Atelier of San Antonio which is located on the parade route of two fiesta parades. To volunteer on April 27th and 28th for a good time, a good cause, parade watching and to help sell lots of beer from the TTSBE bier garten, contact: Donna Dobberfuhr by email—two2views@ yahoo.com.



Bonsai Smiths


Howard and Sylvia Smith
www.BonsaiSmiths.net
bonsaismiths@earthlink.net
tel# (972) 392-1430
Fax# (972) 661-0694

Cultivators of fine trees
Collection maintenance
Private instruction
Classes, lectures and demos


Sanderson Creek Bonsai

1634 Stella Street • Fort Worth, Texas

Bonsai, trees/soil, lava, pumice, expanded shale,
kanuma, akadama, pots, Joshua Roth tools
& Dyna-Gro/ Dyna-Rok products
all provided with a smile!



Hours: 2:00 to 6:00 pm Tues-Fri, 10:00 to 5:00 pm Sat
817-534-3220 www.sc-bonsai.com



Pegasus Pottery
By Sandi McFarland
"Specializing in carved stoneware"
Cups, plates, bowls, etc.
And now creating small bonsai pots!
Let me make something special for you!

1405 Limetree Ln.
Irving, TX 75061
972-438-9782
potter@pegasuspottery.com www.pegasuspottery.com
10% Discount to BSD Members!

Generous Businesses Give Discount to BSG Members

Present your BSD membership card at the following participating businesses for a 10% discount on merchandise:

- The Bonsai Smiths
- Dream Gardens
- Ray Hernandez's Bent Tree Bonsai
- Pegasus Pottery
- Sanderson Creek Bonsai

We are so grateful to these businesses for their generosity to BSD



Place Your Ad Here!
Business card size—\$5 per month
Half page—\$20 per month
Full page—\$35 per month
For more information, contact Sandi McFarland at
972-438-9782 or potter@pegasuspottery.com

BSD Board of Directors

President—George Straw, GSTRA@aol.com, (214) 357-3048
Acting Vice President—John Miller, President Emeritus, bonsaimiller@aol.com
Treasurer—Open
Secretary—Sandi McFarland, potter@pegasuspottery.com, (972) 438-9782

Arboretum Show Update!

By Sylvia Smith

We had a great show although I will be glad not be so busy next year with work and convention stuff so that I will remember to get started earlier! We did pay the price for not preparing - staying up until midnight three nights in a row making companion plants and getting trees ready! I'd like to thank my sister and her husband for providing the extra truck to haul stuff to the arboretum. The display trees came together with the help of George, Dave, Howard (and me) and I was happy to see James Bonney and Mark Hall also bring a tree and volunteer their time to the show. A special thanks to Kyle Downing, Mike Arce, Ron Kerly, Mark Hall, Dave Schleser, George Straw, Ladd Kelly and Karen Corbett (and her husband Ron) for being there throughout the weekend watching trees and answering questions. A super special thanks to Tom Mozden for making the backdrops for the displays and making even more for the convention. They looked great!!

BONSAI SOCIETY OF DALLAS

www.bonsaisocietyofdallas.com

MEMBERSHIP FORM

Please mail to:
Bonsai Society of Dallas
P.O. Box 836922
Richardson, TX 75083-6922
Or Turn in at Club Meeting

Name(s): _____

Address: _____

City: _____ State: _____ Zip Code: _____

Telephone: _____ E-mail: _____

Date: _____ Individual Membership: \$25.00

Joint Membership: \$30.00

Renewal
 New Membership

-- ✂ ----- ✂ ----- ✂ -----

Do Not Cut: For Treasurer Use Only
Member Receipt:

Name: _____ Date: _____

Amount Paid: _____ Membership Year: _____